

WALL MOUNTS

EP + Sylomer®: Models and dimensions

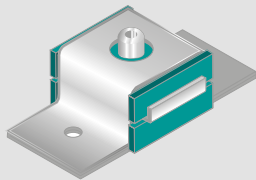
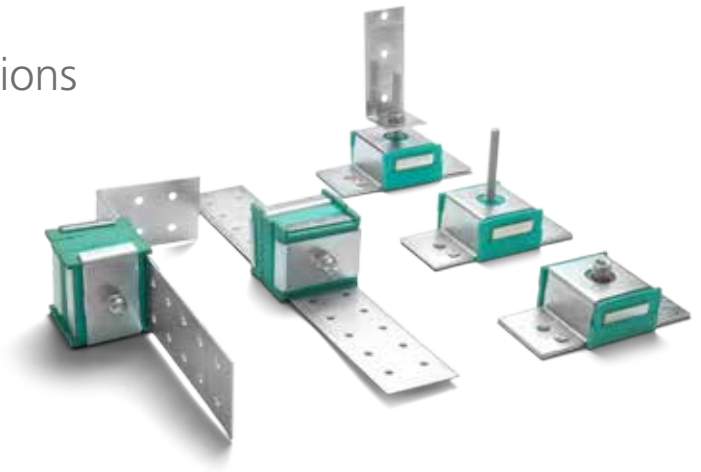
LOAD AMC DEL PRODUCTO

Range designed for the floating suspension of sound-proofed walls. Sylomer® avoids the transmission of vibrations while providing optimal acoustic results.

They have a "FAIL SAFE" rugged metal structure, which is overload-proof.

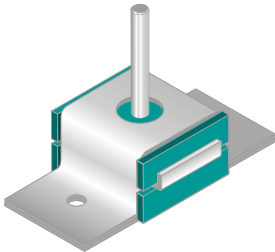
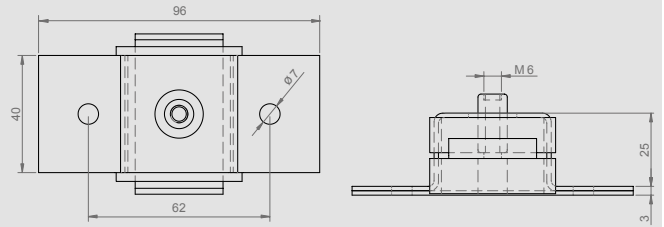
Recommended for applications where fire or impact resistance is necessary.

These mounts are also suitable for the isolation of vertical pipes, or any type of light-weight ducts that need to be isolated.



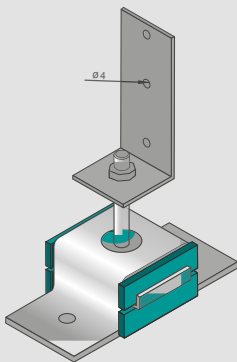
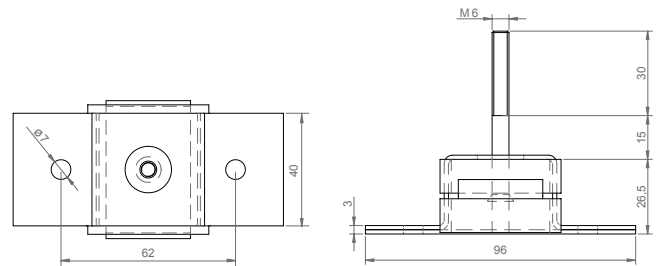
EP + Sylomer Type B

It is secured to the wall by means of two holes. It has a female M6 metal insert.



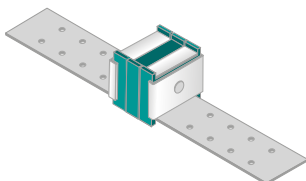
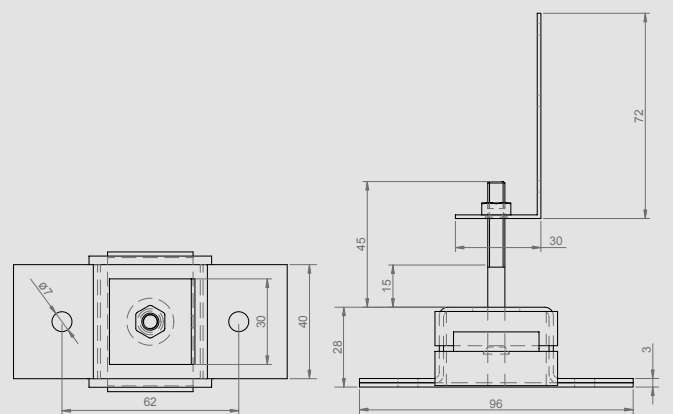
EP + Sylomer Type A

It is secured to the wall by means of two holes. It has a female M6 metal insert.



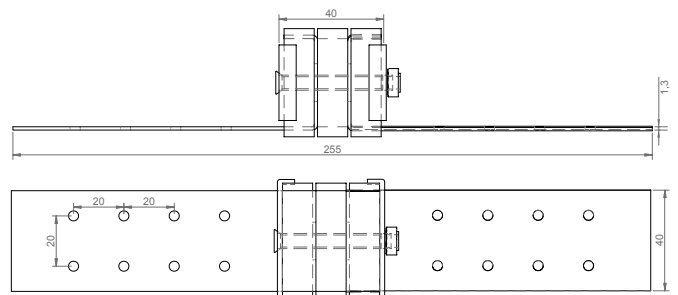
EP400 + Sylomer

It is secured to the wall by means of two holes. It has a male M6 metal insert and also an "L" welded nut for securing to the profile.



EP 600 + Sylomer

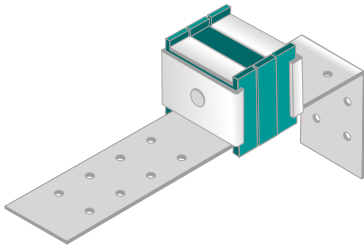
They are secured by two "predrilled" and easy-to-cut pins to facilitate their installation.



AKUSTIK + **sylomer**[®] by getzner

WALL MOUNTS

EP + Sylomer[®]: Models and dimensions

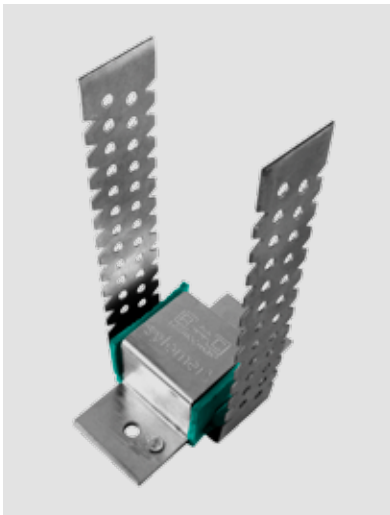
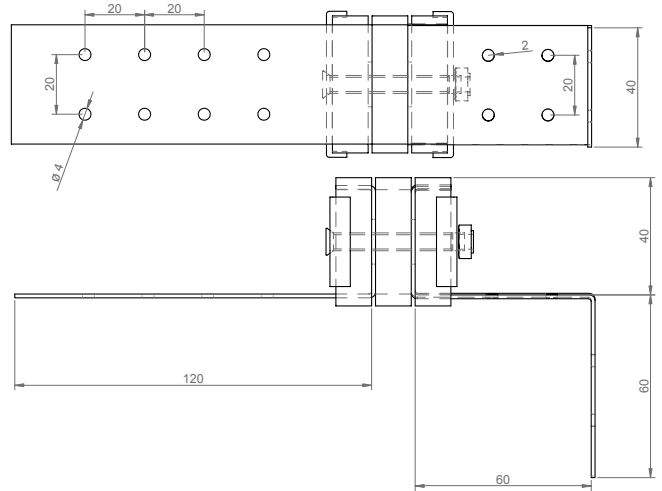


EP 650 + Sylomer

They are secured by two "predrilled" and bent pins to facilitate their installation.

This principle can be used to make a wide range of variants.

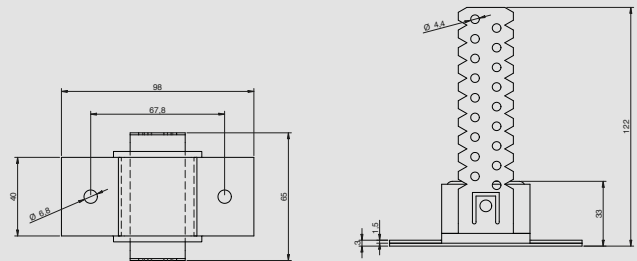
Contact us if you require a product more adapted to your building technique.



EP 700 + Sylomer

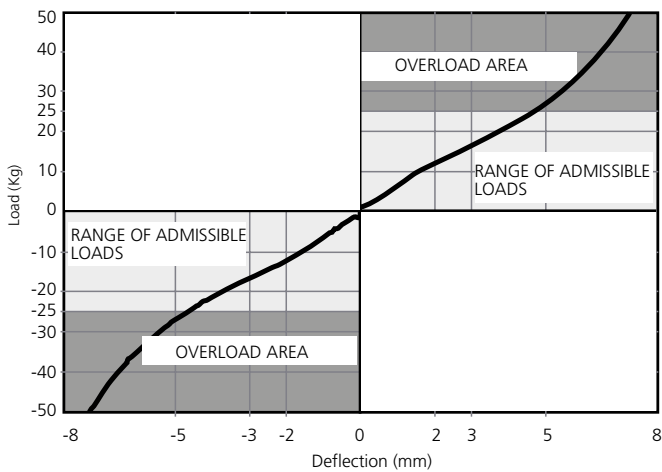
This wall mount has been designed to hold "C" profiles either in vertical or horizontal position.

Allows inclined ceilings with a simple and fast installation procedure.

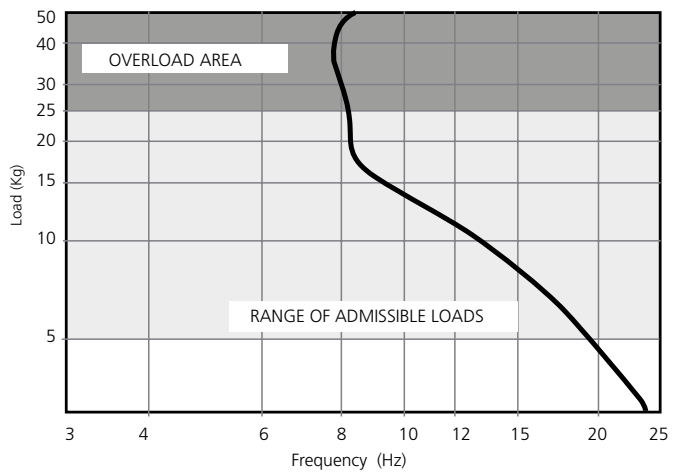


TECHNICAL CHARACTERISTICS

LOAD DEFLECTION GRAPH
EP Akustik + Sylomer **25**

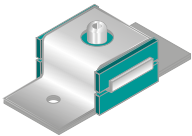
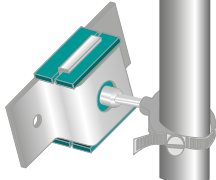
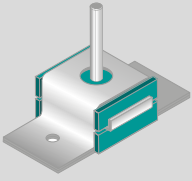
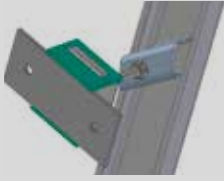
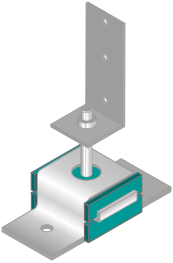

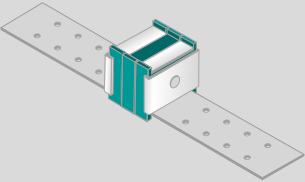
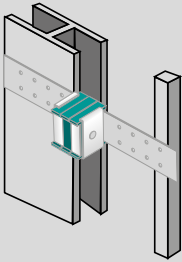
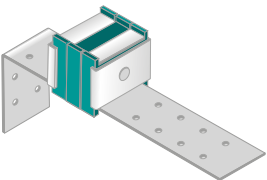
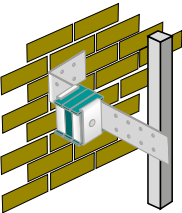


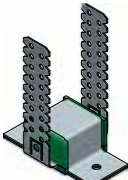
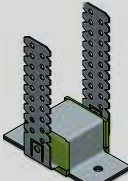
NATURAL FREQUENCY GRAPH
EP Akustik + Sylomer **25**



WALL MOUNTS

EP + Sylomer®: Range

	REF. AMC	INSTALLATION EXAMPLE	CODE
	EP + Sylomer Type B		23701
	EP + Sylomer Type A		23703
	EP400 + Sylomer		23705
	EP 600 + Sylomer		23707
	EP 650 + Sylomer		23709

	REF. AMC	(Kg). MAX.LOAD	CODE
	EP 700 + Sylomer 30	30	23711
	EP 700 + Sylomer 75	75	23712

AKUSTIK + AMC Mecanocaucho & AKUSTIK+sylomer[®]

AKUSTIK + sylomer[®] by getzner

WALL MOUNTS

EP + Sylomer[®]: Applications



Euskalduna Auditorium Bilbao



Music School Helsinki